

## AC Contactor

## AC Contactor LNG3



Rated Current In(A)	Type Designation	Article No.
09	LNG3-3TF09	G3TF01
12	LNG3-3TF12	G3TF02
16	LNG3-3TF16	G3TF03
22	LNG3-3TF22	G3TF04
32	LNG3-3TF32	G3TF05
45	LNG3-3TF45	G3TF06
63	LNG3-3TF63	G3TF07
75	LNG3-3TF75	G3TF08
85	LNG3-3TF85	G3TF09
110	LNG3-3TF110	G3TF10
140	LNG3-3TF140	G3TF11
170	LNG3-3TF170	G3TF12
205	LNG3-3TF205	G3TF13
250	LNG3-3TF250	G3TF14
300	LNG3-3TF300	G3TF15
400	LNG3-3TF400	G3TF16
475	LNG3-3TF475	G3TF17

## Technical Data

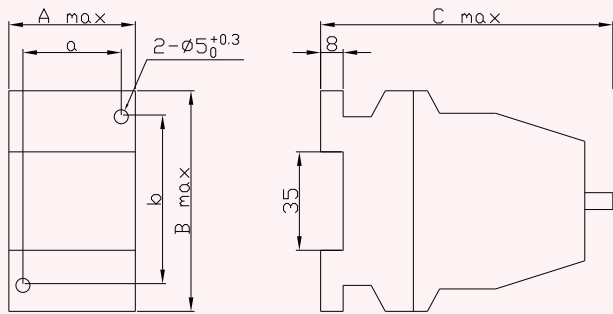
### AC Contactor LNG3

- LNG03 series AC Contactors are suitable for frequency 50/60Hz, rated insulation voltage up to 1000V, rated operation current 9~475A under AC-3 duty
- It is mainly used for making/breaking electric circuit at a long distance & for frequent starting/stopping & with thermal relay to compose a magnetic motor starter
- The product conforms to IEC60947-4-1 standard

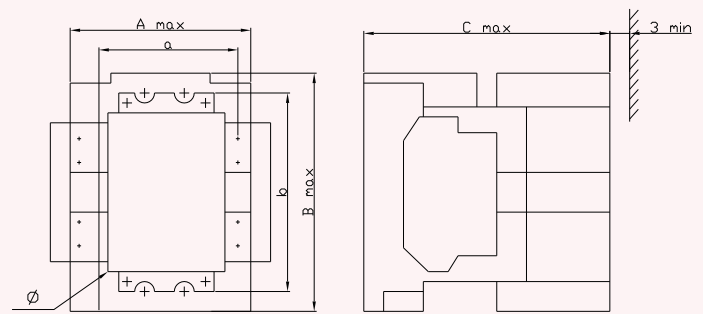
### Electrical

Type	3TF40 3TF41	3TF42 3TF43	3TF44/45	3TF46 3TF47	3TF48 3TF49	3TF50 3TF51	3TF52 3TF53	3TF54 3TF55	3TF56 3TF57	
Mechanical endurance(x10 <sup>6</sup> )	10	10	10	8	8	8	8	8	8	
Conventional thermal current(A)	20	30	45	80	100	160	210	300	400/550	
Rated insulation voltage (V)	660	660	660	1000	1000	1000	1000	1000	1000	
Rated(380V) operating current(A)	AC-3	9/12	16/22	32	45/63	75/85	110/140	170/205	250/300	400/475
	AC-4	3.3/4.3	7.7/8.5	15.6	24/28	34/42	54/68	75/96	110/125	150
Power of control lable motor(KW) AC-3	380V	4/5.5	7.5/11	15	22/30	37/45	55/75	90/110	132/160	200/250
	660V	5.5/7.5	11	23	39/55	67	100	156	235	375
Power of control lable motor(KW) AC-4	380V	1.4/1.9	3.5/4	7.5	12/14	17/21	27/35	38/50	58/66	81
	660V	2.4/3.3	6/6.6	13	20.8/24	29.5/36	46.9/60	66/86	100/114	140
Frequency of operation (1/h)	AC-3	1000	750	750	1200/1000	1000/850	1000/750	700/500	700/500	500/420
	AC-4	250	250	250	400/300	300/250	300/200	200/130	200/130	150
Electrical endurance (x10 <sup>6</sup> )	AC-3	1.2	1.2	1.2	1.2	1.2	1.2	1.2	1.2	1.2
	AC-4	0.2	0.2	0.2	0.2	0.2	0.2	0.2	0.2	0.2
Operating voltage range of coil	(0.8~1.1)Ue									
Power consumption of coil	Attracting (VA)	10	10	12.1	17	32	39	58	84	115
	Starting (VA)	68	69	101	183	330	550	910	1430	2450
Rated insulation voltage of auxiliary contacts(V)	690									
Conventional thermal current of auxiliary contacts(A)	10									
Rated operating current of auxiliary contacts (A)	AC15 380/220	6/10	6/10	4/6	4/6	4/6	4/6	4/6	4/6	4/6
	DC13 220V	0.45	0.45	0.48	0.48	0.48	0.48	0.48	0.48	0.48
Rated voltage of the control coil(V)	50Hz	24,36,48,110,127,220,380,etc								
	60Hz	24,110,220,440,etc								

## Dimensions(mm)



LNG3-3TF40~45(Table 1)



LNG3-3TF46~57(Table 2)

Table 1

Type	A max	B max	C max	a	b
LNG3-3TF40,41	45	78.5	104(90)	35+0.31	60+0.37
LNG3-3TF42,43	46	85	114	35+0.31	75+0.37
LNG3-3TF44/45	74	88	108	50+0.31	75+0.37

Table 2

Type	A max	B max	C max	a	b	φ
LNG3-3TF46,47	91(114)	120	124	70+0.6	100+0.2	4.8
LNG3-3TF48,49	102(125)	135	142	80+0.6	100+0.2	5.5
LNG3-3TF50,51	122(145)	156	154	100+0.2	130+0.8	6.5
LNG3-3TF52,53	140(163)	185	190	100+0.2	160+0.8	7
LNG3-3TF54,55	150(173)	205	200	120+0.2	180+0.8	9
LNG3-3TF56,57	165(188)	205	225	130+0.8	180+0.8	9