

Distribution Box And Panel Board

Metal Panel Board



TPN-Xway



TPN-Xway



MCB



ELCB

OR



MAIN SWITCH

Metal DB LNF4

| Phase/Ways | Type Designation | Article Number |
|---------------------|------------------|----------------|
| Surface Type | | |
| 3/4 | LNF4-TS04 | F4TS01 |
| 3/6 | LNF4-TS06 | F4TS02 |
| 3/8 | LNF4-TS08 | F4TS03 |
| 3/12 | LNF4-TS12 | F4TS04 |
| 3/16 | LNF4-TS16 | F4TS05 |
| Flush Type | | |
| 3/4 | LNF4-TF04 | F4TF01 |
| 3/6 | LNF4-TF06 | F4TF02 |
| 3/8 | LNF4-TF08 | F4TF03 |
| 3/12 | LNF4-TF12 | F4TF04 |
| 3/16 | LNF4-TF16 | F4TF05 |

Metal DB LNF4

- Distribution Control of Buildings & Houses
- Protect electrical appliances from overload volt & current
- Short & frequency switch ON/OFF under normal operating condition is available

Technical Data

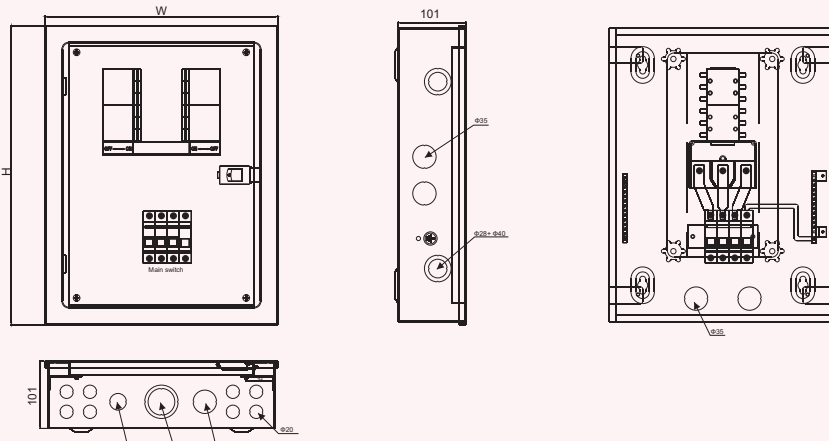
Electrical

- Suitable for circuit of AC 50/60Hz, rated volt up to AC 660V;
- Rated current up to 125A
- With 2 incomers as main switch and earth leakage protection
- Packing: Standard exporting packing with stronger carton or as per customers requirements

Mechanical

- Material: Iron plate
- Thickness: TPN-1.0/1.2mm
- All metal parts: Nickel plated procession
- Offer without MCB & main switch/connecting wires
- Painting color: Pantone standard-RAL 7032 or RAL 7035 for regular supply, other required color need to confirm with us before order
- Finishing: Smooth

Dimensions (mm)



LNF4

| Model | Size | Surface install |
|-----------------|----------------|-----------------|
| | H x W x 101/mm | |
| LNF4 - 4W | 448 | 348 x 101 |
| Three LNF4 - 6W | 502 | 348 x 101 |
| Phase LNF4 - 8W | 556 | 348 x 101 |
| LNF4 - 12W | 610 | 348 x 101 |
| LNF4 - 16W | 664 | 348 x 101 |

| Phase | Size | Surface install |
|------------|----------------|-----------------|
| | H x W x 101/mm | |
| LNF4 - 4W | 464 | 364 x 101 |
| LNF4 - 6W | 518 | 364 x 101 |
| LNF4 - 8W | 572 | 364 x 101 |
| LNF4 - 12W | 626 | 364 x 101 |
| LNF4 - 16W | 680 | 364 x 101 |