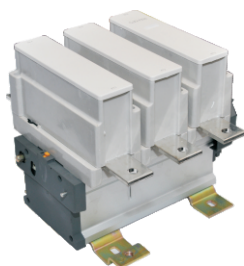


AC Contactor



AC Contactor LNG1-F

Rated Current In(A)	Type Designation	Article No.
115	LNG1-F115	G1F01
150	LNG1-F150	G1F02
185	LNG1-F185	G1F03
225	LNG1-F225	G1F04
265	LNG1-F265	G1F05
330	LNG1-F330	G1F06
400	LNG1-F400	G1F07
500	LNG1-F500	G1F08
630	LNG1-F630	G1F09
780	LNG1-F780	G1F010

Technical Data

AC Contactor LNG1-F

- Suitable to AC 50/60Hz & Volt up to 1000V/115~800A circuit
- Used to control long distance motor start & stop
- Available to assemble with thermal relay to realize magnetic start function

Electrical

		F115	F150	F185	F225	F265	F330	F400	F500	F630	F800
Rated Current Ie(A)											
AC-3	380V	115	150	185	225	265	330	400	500	630	800
	660V	86	107	118	135	170	225	305	355	460	485
AC-4	380V	52	60	79	85	105	117	138	147	188	242
	660V	49	57	69	82	98	107	135	145	170	215
Max power:pe(KW)											
AC-3	380V	55	75	90	110	132	160	200	250	335	450
	660V	80	100	110	129	160	220	280	335	450	475
AC-4	380V	25	30	40	45	55	63	75	80	100	129
	660V	45	51	63	75	90	100	129	140	160	200
Current agreement fever(Ith)A		200	250	275	315	350	400	500	630	800	1000
Rated Voltage(Ue)V		380、660、1000									
Rated Insulated Volt (Ui)V		1000									
Design standard		IEC/EN 60947-4-1 for all									
AC-3	Electricity Endurance	60×10 ⁴			50×10 ⁴			30×10 ⁴		20×10 ⁴	
	Operation cycles(h ⁻¹)	600					300				
AC-4	Electricity Endurance	15×10 ⁴					8×10 ⁴			5×10 ⁴	
	Operation cycles(h ⁻¹)	150									
Mechanical life											
Block	Stipulated thermal current(Ith)A	3×10 ⁶					1×10 ⁶				
	Electricity Endurance	10									
	AC-15	60×10 ⁴			50×10 ⁴			30×10 ⁴		20×10 ⁴	
	DC-13										
Coil data											
Rated controlling power volt(Us)V		24、48、110、220、380					48、110、220、380				
Closing Volt V		0.85~1.10Us									
Releasing volt V		0.20~0.75Us									
Power frequency(VA)	close	550	800	1200	1200	1250	1650				
	keep	45	55	13	20	24	22				
Closing time(ms)		23~35	20~35	30~65	40~75	40~80					
Releasing time(ms)		5~15	7~15	100~170	100~170	100~200					
Coil power(w)		12~16	18~24	12	14	18	20				

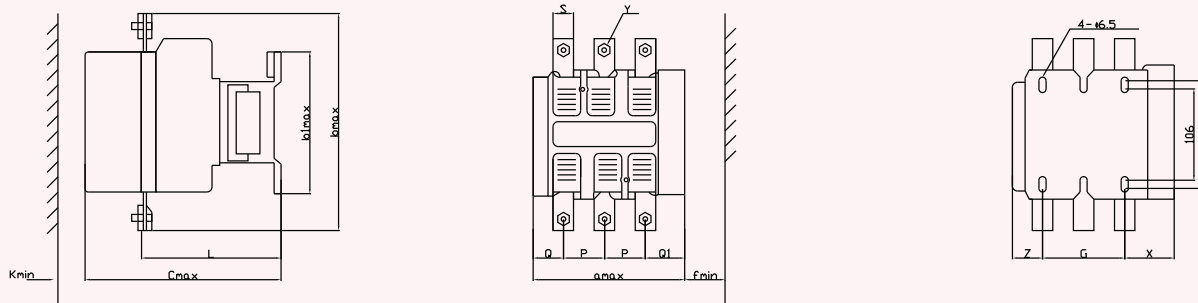
Mechanical

- Temp condition: -5℃~40℃
- Altitude: ≤2000m
- Atmosphere condition: relative humidity ≤50% under temp=40℃ & permit higher humidity under temp<40℃.
Example for relative humidity=90% under temp=20℃
- Mounting: Screw mounting class III not permit to mount in the condition of shaving
- Pollution class: B class 3

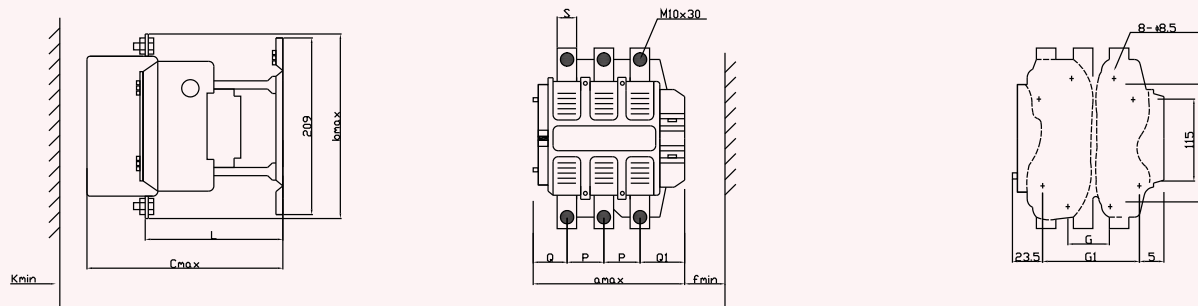
Terminal Connection

Code	Main circuit				Auxiliary & Controlling circuit			
	Copper cable		Copper busbar		Soft cable		Hard cable	
	Quantity	Square(mm ²)	Quantity	Size(mm)	1	2	1	2
LNG1-F115	1	95	2	20×3	2.5		1	2
LNG1-F150	1	120	2	25×3				
LNG1-F185	1	150	2	25×3				
LNG1-F225	1	185	2	32×4				
LNG1-F265	1	240	2	32×4				
LNG1-F330	1	240	2	30×5				
LNG1-F400	2	150	2	30×5				
LNG1-F500	2	240	2	50×5				
LNG1-F630	/	/	2	60×5				
LNG1-F800	/	/	2	60×5				

Dimensions(mm)

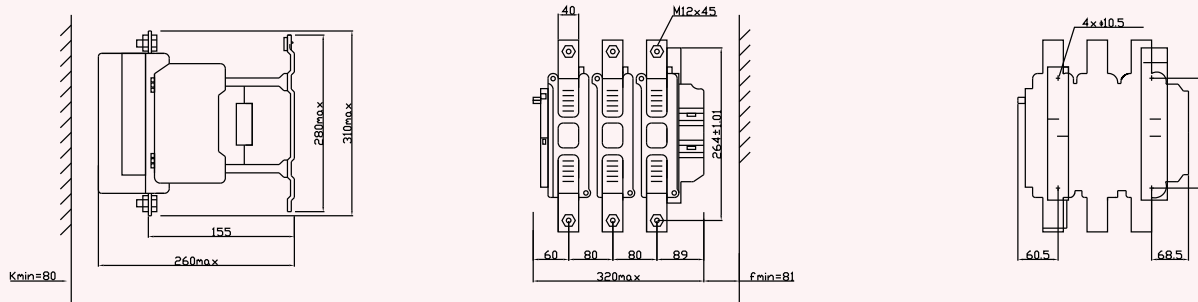


Code	amax	bmax	b1max	cmax	G	L	P	Q	Q1	S	X	Z	Y	Fmin	Kmin
LNG1-F115	165	170	137	171	80±0.8	107	37	29.5	60	15	57	26.5	M6 x 15	133	40
LNG1-F150	165	170	137	171	80±0.8	107	40	26	57.5	20	57	26.5	M6 x 20	133	40
LNG1-F185	171	197	137	181	80±0.8	113.5	40	30	60	20	59.5	29	M6 x 20	133	40
LNG1-F225	171	197	137	181	80±0.8	113.5	48	22	52	25	59.5	29	M6 x 30	133	40
LNG1-F265	204	203	145	213	96±1.1	141	48	39	66.5	25	61	44.5	M10 x 30	146	50
LNG1-F330	213	206	145	219	96±1.1	145	48	43	74	25	67	50.5	M10 x 30	146	60



Code	amax	bmax	cmax	Fmin	Kmin	S	G	L	P	Q	Q1
LNG1-F400	213	206	219	146	70	25	19.5	145	48	43	74
LNG1-F500	233	238	232	150	70	30	39.5	146	55	46	77

Code	Size code	Standard	Max	Min
LNG1-F400	G	80	102	66
	G1	180	192	156
LNG1-F500	G	80	120	66
	G1	180	210	156



Size code	Standard	Max	Min
a	180	195	100

Note: fmin=required space for coil replacment; kmin=min electricity distance.